



WWW.MORETRACTION.COM



TMS-DRAG-SPORTSMAN-MAP

**ELECTRONIC
TRACTION CONTROL**

**US PATENT 6,577,944
OTHER PATENTS PENDING**

COPYRIGHT NOTICE

Copyright © 1999-2013 Davis Technologies, LLC.

All rights reserved.

Information in this document is subject to change without notice. Other products and companies referred to herein are trademarks or registered trademarks of their respective companies or mark holders. Any components shown are for illustration or instructional purposes only.

Publication and redistribution of this manual over the Internet or in any other medium without prior written content is expressly forbidden. In all cases this copyright notice must remain intact and unchanged.

Davis Technologies, LLC.

PO Box 8250

Asheville, NC. 28787

(828) 645-1505

email: support@moretraction.com

web: www.MORETRACTION.com

TRADEMARKS

All trademarks used herein are the property of their respective owners.

RacePak® is a registered trademark of Competition Systems, Inc.

MSD® & Power Grid® are registered trademarks of Autotronic Controls Corporation.

TABLE OF CONTENTS

TABLE OF CONTENTS	1
INTRODUCTION	3
HOW DOES IT WORK?	4
INSTALLATION	6
SYSTEM OVERVIEW	8
TRACTION CONTROL ADJUSTMENTS	9
OUTPUT CONTROL PARAMETERS:.....	10
% CUT	10
RAMP IN.....	10
EXAMPLE 0-5 DEGREES BOOST RETARD	11
TRACTION CONTROL SETUP	12
TRIGGER COUNT:.....	12
STARTING RPM:	12
BUFFER:.....	12
SAMPLE RATE:.....	12
CONFIGURING.....	13
TRIGGER COUNT:.....	13
STARTING RPM:	14
BUFFER:.....	15
SAMPLE RATE:.....	15
TESTING.....	16
SENSOR TEST:	16
RPM WINDOW TEST:	16
FORCED ACTIVATION TEST:	17
CHECKING SETTINGS:.....	18
FACTORY RESET.....	20
FIRMWARE UPDATING	21
APPENDIX A.....	23
APPENDIX B.....	24
APPENDIX C.....	25
RING & SENSOR	26

TRACTION CONTROL PANEL SOFTWARE:..... 27
 MAIN TAB SETTINGS:..... 28
 ADVANCED MAIN TAB SETTINGS:..... 30
 MORE TAB SETTINGS:..... 32
 STARTING RPM 32
 END RPM 32
 TRIGGERS 32
 MORE TAB ADVANCED SETTINGS:..... 34
 NULL TAB SETTINGS: 36
 STEP 1 & STEP 2 CORRECTIONS (NULL MODE 0):..... 36
 STEP 1 CORRECTIONS ONLY (NULL MODE 1):..... 36
 NO CORRECTIONS (NULL MODE 2): 36
 ADMIN TAB: 38
 USB TO SERIAL ADAPTER: 39
HANDHELD PROGRAMMER 40
DISCLAIMER 41
NOTES 42
NOTES 43
NOTES 44
CONTACT INFORMATION 45

INTRODUCTION

We would first like to thank you for your purchase of our system. We believe it is the best system available to you on the market today. This system balances effectiveness with ease of installation, broad field of uses, and cost.

As with all technical devices such as engines, shocks, carburetors, clutches etc., the product's performance is based largely on your ability to use it properly. Testing in controlled circumstances will help you determine the proper settings for your application and your situation. Testing is very important since it will help you utilize this product to its full potential.

Please read all of the instructions and information thoroughly before attempting to install or use this product.

HOW DOES IT WORK?

The *Non Self-Learning* systems, like our Sportsman series, periodically compares the rate of acceleration of the driveshaft to an Adjustable Fixed Rate (AFR), known as Threshold. If the DS RPM rate of change is in excess of that Threshold, then a correction is made. The comparison is made every 1/8 of a turn of the driveshaft.

Basically, this [Patented](#) system looks for spikes in DS RPM that are caused by wheel slip. If these spikes are large enough, then a correction is made, reducing the slip.

By adjusting the Threshold, the user can tune the system to correct larger slips, while not reacting to smaller, harmless, slips. This means the user does not have to figure out the desired DS/Engine RPM and build a preset “Dot Plot” (anybody got a crystal ball?).

A typical 1/8th mile car turns the drive shaft about 300 times in a 660 ft. run. At 8 triggers per rev, that would be like building a “Dot Plot” w/ 2400 dots, and 1/4 mile cars turn the drive shaft about 550-600 times in 1320 ft. run. At 8 triggers per rev, that would be 4400-4800 dots.

[Self-Learning](#) systems, such as our Lite and Pro units, compare the rate of acceleration of the drive shaft to a calculated threshold value that is constantly updated based on the average of the previous measurements. This update occurs on every drive shaft revolution. So, if the last 1/8 of a

turn of the drive shaft is faster than the average of the last full revolution, then a slip is detected. Through this very advanced [Patented](#) process, the system constantly accounts for track conditions, tire condition, etc. to constantly update the internal settings. These settings are updated as many as 800 times a second to keep the unit calibrated to exactly the right settings regardless of changing conditions.

Basically, the system learns the average rate of acceleration of the drive shaft, and if there is a sudden spike in RPM above that learned rate, then a correction is made. With the Self-Learning feature, the user doesn't have to try to figure out the DS RPM rate of change and set a "Threshold", the system does it for you, every drive shaft revolution!

The user does have an adjustment referred to as "Mode" that sets the overall sensitivity of the system to make a correction based the extent of the tire slip. By adjusting the Mode, the user can tune the system to correct larger slips, while not reacting to smaller, harmless, slips.

This system is not simply a few lines of code added to an existing fuel injection or ignition system, and called traction control. This system utilizes a patented method and multiple high speed processors to very accurately and effectively monitor rates of acceleration to determine wheel speed, and tire slip. In fact, Davis Technologies' systems are at least 20 times faster than other systems which are integrated into the fuel injection or ignition system.

Our systems only job is Traction Control!

INSTALLATION

Installation of the system is very simple. It is very important to make all connections correctly. Improper installation could result in poor system performance or damage to the system.

Keep all wires away from any spark plug wires and coils or other sources of electrical noise and heat.

The unit should be mounted away from any sources of electrical noise or high heat.

Make the connections as follows:

2 Pin Connector (Power In)

1. Connect pin “A” (RED wire) to 12v Positive.
2. Connect pin “B” (BLACK wire) to 12v Ground.

3 Pin Connector (Sensor)

1. Connect the pin marked “A” (RED wire) to the red wire on the sensor (12v positive)
2. Connect the pin marked “B” (BLACK wire) to the black wire on the sensor (ground).
3. Connect the pin marked “C” (WHITE wire) to the white wire on the sensor. This wiring is for sensors supplied by Davis Technologies.

If another type of sensor is used, check with the manufacturer to determine connections. (IMPORTANT--The sensor must be capable of 15Khz resolution!!)

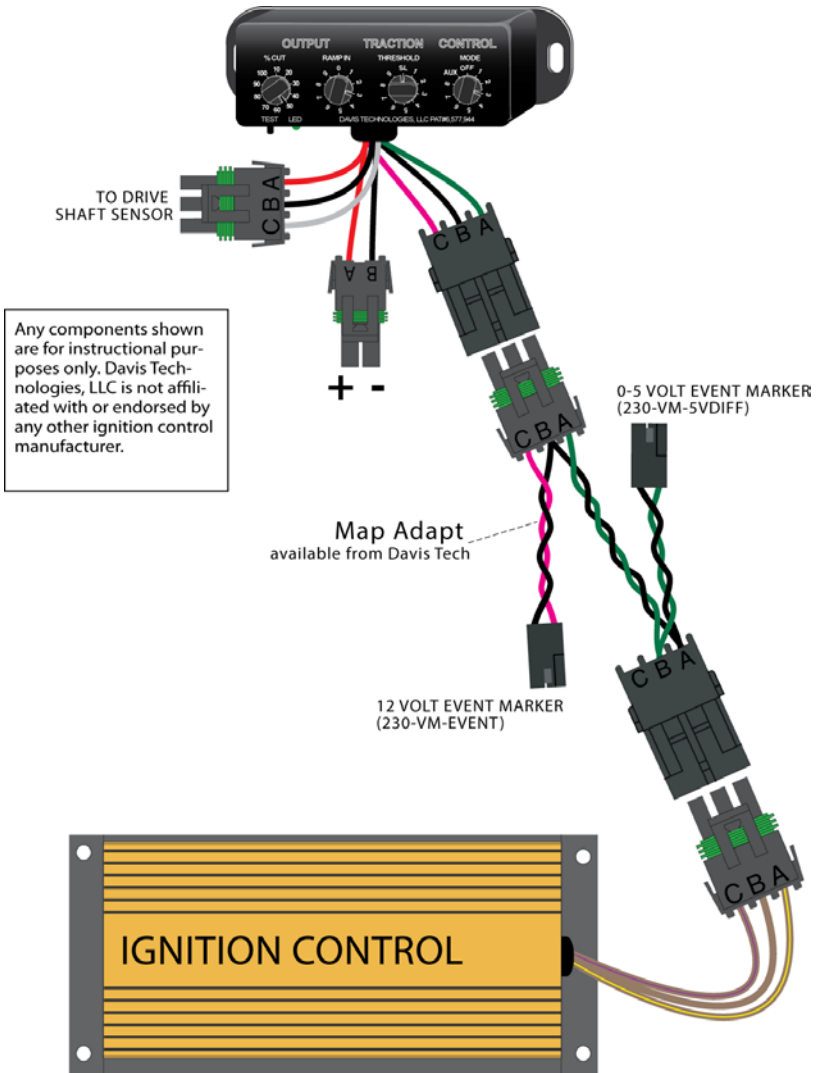
3 Pin Connector (Output)

1. Connect the pin marked "A" (GREEN wire) to the MAP Signal wire on the ignition controller.
2. Connect the pin marked "B" (BLACK wire) to the MAP Ground wire on the ignition controller.
3. Connect the pin marked "C" (PINK wire) to the data system or a LED to indicate when the system is making corrections. (12v+ output through a 1K resistor)

MAP Sensor Connection (Ignition Control)

1. Connect pin marked "A" (ground) to Traction Control Output plug pin "B".
2. Connect pin marked "B" (signal) to Traction Control Output plug pin "A".

SYSTEM OVERVIEW



TRACTION CONTROL ADJUSTMENTS

Different tracks, cars, conditions, etc. may require different settings for the system to function effectively. The dials on the unit are used for these settings.

The Drag-Sportsman incorporates a patented method to control wheel spin where the users sets a Threshold of acceleration that if exceeded will cause the timing to retard.

The sensitivity of the system is adjusted using the Threshold dial. The Threshold simply sets the maximum rate of acceleration allowed. If this rate is exceeded then a correction is made. The higher the number the more aggressive the system is. A good starting point is Threshold 3. If you feel that your system is making too many corrections while set to Threshold 3, then try Threshold 2. Valid settings for Threshold are 1-8.

(OFF turns unit off, except for sensor test / AUX activates window RPM test).



OUTPUT CONTROL PARAMETERS:

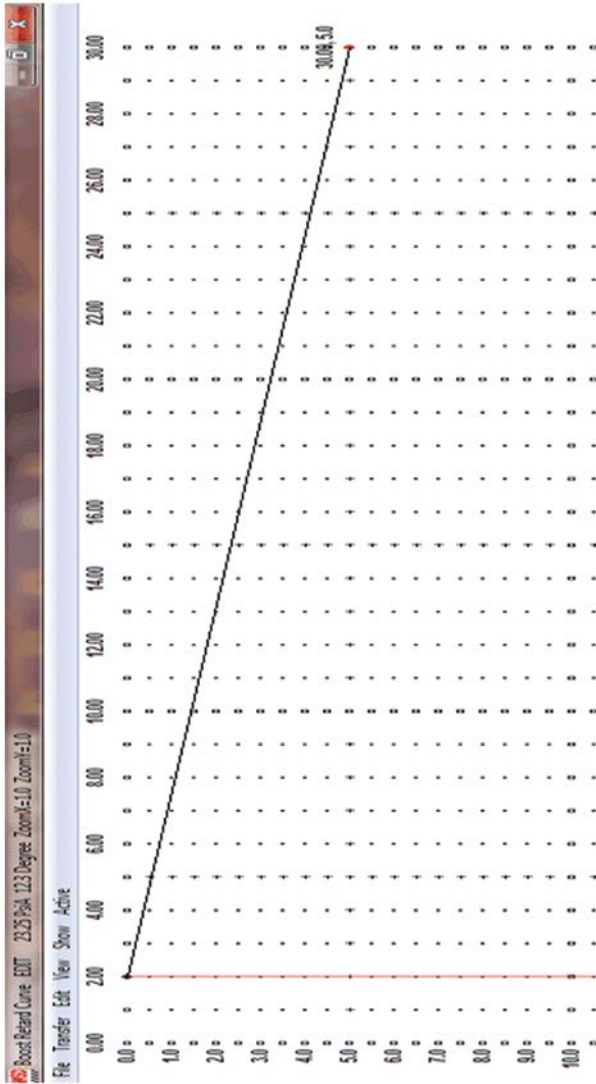
The TMS-Drag-Sportsman-MAP connects to the MAP sensor input of the ignition controller, sending it a 0-5 volt signal to cause it to retard ignition timing when wheel slip is detected. You must configure your controller to retard timing when the MAP sensor input senses "Boost". A timing plot of Zero Boost=0 Degrees Retard and Full Boost=10 Degrees Retard is a good starting point.

% CUT is the setting that controls the amount of the ignition timing that will be cut. This is the percent of total retard that is setup in the ignition "Boost Retard". The percent that is cut can be adjusted from 10% to 100%, in 10% increments. Once the slip condition is corrected, the timing is ramped back in until the original timing is re-established. (Example using the 0 to 10 degree retard setup described above -100% Cut=10 Deg. retard / 40% Cut=4 Deg. retard)

RAMP IN is used to control how quickly the timing is ramped back in after the slip condition is corrected. The time is adjustable from 0/10th to 3/10th seconds in 10 steps. (3=1/10th second)

If the amount of power reduced during a slip condition is too great, then a smaller % CUT may be required. If the tires recover from a slip condition and immediately slip again, then a longer RAMP IN may be desired.

EXAMPLE 0-5 DEGREES BOOST RETARD



(The image above is from MSD® GraphView Software)

TRACTION CONTROL SETUP

TRIGGER COUNT:

The unit must be configured for the number of counts it will receive per revolution of the driveline.

STARTING RPM: is a user adjustable setting that allows the racer to set the point at which the unit begins making corrections. If the Starting RPM is set to 1800 RPM, then the unit is active and monitoring the driveline, but not making any corrections until the Starting RPM is reached. This may be useful to prevent the Traction Control from interfering with an already established launch setup.

BUFFER: is another setting that can be used to fine tune the system. The buffer sets the number of consecutive errors required to cause a correction. Buffer 0 will react to each error in acceleration. Buffer 1 will require at least 2 consecutive slip conditions to cause a correction. This is useful to filter out small tire slips that may occur quickly, but have no ill effect on the car. (Buffer 1 is the default for most applications, but some experimenting with this setting may be useful to see what works best for you).

SAMPLE RATE: of the unit can also be changed by the user, however this should only be done after consulting w/ tech support. The lower the number the faster the Sample Rate, which makes the unit less sensitive, but faster to react. The higher the number the slower the Sample Rate, which makes the unit more sensitive, but slower to react. Valid settings are 1-5. (Default=3)

CONFIGURING

TRIGGER COUNT:

(DEFAULT= 8)

The unit must be configured for the number of counts it will receive per revolution of the driveline. Once set the value will remain until changed by the user. To change the value, follow these steps.

1. Set the “Mode” dial to “4”
2. Hold down the “Test” button
3. Turn the power On
4. While holding the “Test” button down, move the “Mode” dial to the desired number of triggers divided by two. **(example- 8 triggers/2=4)**
5. Release the “Test” button.

The LED will flash to show the number of triggers the unit is now set to. **(The Trigger Count must be set correctly for the accurate RPM calculations)**

STARTING RPM: (DEFAULT (15) 1500 RPM)

The driveline RPM at which the unit **Starts** to make corrections can be set by the user. Once set the value will remain until changed by the user. The RPM is set in 100 rpm increments, (example 1500 rpm, divided by 100 = 15). To change the Starting RPM value, follow these steps.

1. Set the “Mode” dial to “3”
2. Hold down the “Test” button
3. Turn the power On
4. While holding the “Test” button down, move the “Mode” dial to the first digit of the desired Starting RPM.

(example- 1500rpm - first digit=1 / 3000rpm - first digit =3)

5. Release the “Test” button,

The led will flash to show the value has been accepted.

6. Now move the “Mode” dial to the second digit of the desired Starting RPM, then press and release the “Test” button. (example- 1500rpm - sec. digit=5 / 3000rpm - sec. digit =0)

The led will flash to show the value has been accepted.

After about 1 second the LED will Blink to show the value that the Starting RPM is set to. The first digit is output followed by a short pause, then the second digit is output. (1500 RPM = 1,5 Blinks) (zeros are indicated by shorter blinks)

BUFFER: *(DEFAULT= 1)*

A buffer can be set to lower the sensitivity of the unit if desired. To change the value, follow these steps.

1. Set the “Mode” dial to “1”
2. Hold down the “Test” button
3. Turn the power On
4. While holding the “Test” button down, move the dial to the desired buffer value.
5. Release the “Test” button,

The led will flash to show the value that the buffer is now set to. Valid settings are 0-3. (Buffer 2= 2 blinks) (zeros are indicated by shorter blinks)

SAMPLE RATE: *(DEFAULT= 3)*

The Sample Rate can be set to change the sensitivity of the unit. This should only be changed under the advice of tech support. Valid settings are 1-5. To change the value, follow these steps.

1. Set the “Mode” dial to “2”
2. Hold down the “Test” button
3. Turn the power On
4. While holding the “Test” button down, move the dial to the desired Sample Rate value.
5. Release the “Test” button,

The LED will flash to show the value that the Sample Rate is now set to. Valid settings are 1-5.(Most users never need to adjust the Sample Rate)

TESTING

After installation it is recommended that you test the system. To do so please follow these instructions step by step. (Temporarily set the “% Cut” dial to 100 and “Ramp In” dial to 9 for testing)

SENSOR TEST:

This test is useful for setting up the trigger ring and sensor if used.

1. Set the “Mode” dial to “OFF”
2. Rotate the RPM trigger-

The LED will flash each time a trigger is sensed. The unit is not active in any other way and no corrections will be made. The LED will appear to glow if triggered quickly. (The data output will also trigger)

RPM WINDOW TEST:

This mode is useful to check that the system is reading the RPM signal correctly.

1. Set the “Mode” dial to “AUX”
2. Start the engine and accelerate the driveline.
3. When the driveline RPM is within the window of 1000 to 3000 rpm the LED will glow solid and the unit will make a large correction.

FORCED ACTIVATION TEST:

This test is useful to check both stages of cut. The ignition system must be configured prior to executing this test.

This is also useful to test the connections to a data system if used.

1. Set the dial to any setting between 1 to 7.
2. Connect a timing light to the engine
3. Turn “on” the power to the unit, the LED should begin to flash.
4. Start the engine.
5. With the engine idled up to about 3500 rpm; press the Test button on the unit until the LED glows solid. The first correction level will activate for 4 seconds, then the second stage for the next 4 seconds.

(The engine only needs to be running to check ignition timing, outputs will trigger with engine off.)

Note: After the test is complete, the LED will blink to show the firmware version.

If unit does not pass all tests, recheck all setup parameters and connections and retest.

CHECKING SETTINGS!

The current setting for the different adjustments can be verified at any time using the Test button and the LED. This process is divided into 3 sections. Standard, Advanced and Null Zone. The different sections are chosen by the position by the dial when the verification is started.

The **STANDARD** values can be verified at any time by following these steps.

1. Turn the power “On”
2. Set “Mode” dial any position from 1-7.
3. Press the “Test” button and HOLD DOWN.
4. The LED will glow solid for 8 seconds (as in the Forced Activation Test), then blink to show the firmware version.
5. Next the LED will flash the value for the Buffer. (A setting of zero is indicated by a short blip of the LED).
6. After a short pause, the Led will flash for the value of Sample Rate, followed by a pause.
8. Lastly, the LED will Flash the current Self Learning status value. (for tech support purposes only).

The **ADVANCED** values can be verified at any time by following these steps.

1. Turn the power “On”
2. Set “Mode” dial to “OFF”.
3. Press the “Test” button and HOLD DOWN.
4. First, the value of the **Starting RPM** is shown. The LED will blink for the first digit followed by a short pause, then the LED will blink for the second digit. (1500 RPM = 1,5 Blinks) (zeros are indicated by shorter blinks).
5. After a pause, The value for the **Ending RPM** is shown. The LED will blink for the first digit followed by a short pause, then the LED will blink for the second digit. (8500 RPM = 8,5 Blinks) (zeros are indicated by shorter blinks).
6. After a short pause, the LED will flash for the value of **Trigger Count**. (8 Triggers=8 Blinks).

FACTORY RESET

All TC settings can be restored to **Factory Defaults** at any time by following these steps.

1. Set the dial to “5”
2. Hold down the “Test” button
3. Turn the power On
4. While holding the “Test” button down, move the dial to the “Off” position.
5. Release the “Test” button,

The LED will flash rapidly to indicate the Factory Settings have been restored.

FIRMWARE UPDATING

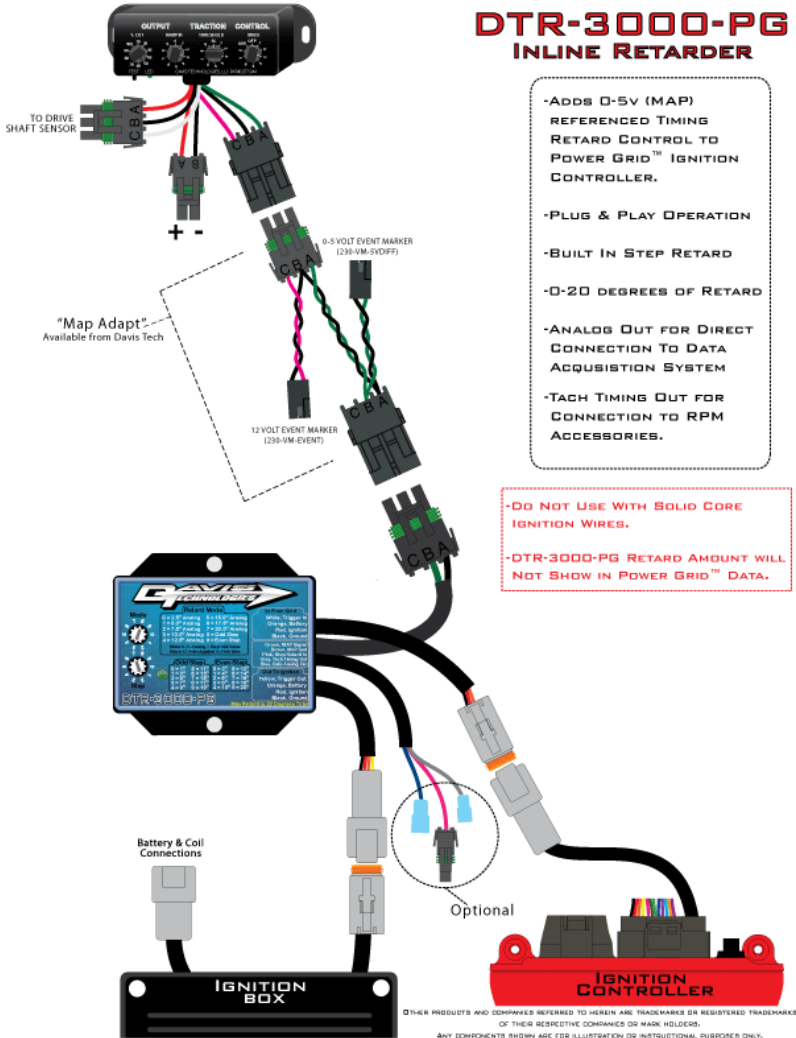
Davis Technologies, LLC may release firmware updates or upgrades periodically to ensure the best possible functionality of the Traction Control System. The traction control unit will need to be returned to Davis Technologies to have the updates installed and configured.

Users should log onto www.moretraction.com, or call Davis Technologies, LLC tech department occasionally to check for updates.

This Page Left Blank

APPENDIX A

TMS-Drag-Sportsman-MAP Installed With MSD® Power Grid® Using Davis Technologies DTR-3000-PG Retarder



APPENDIX B

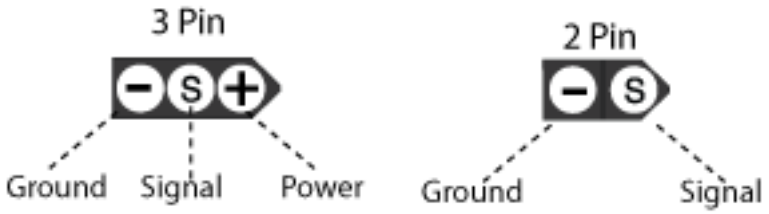
The biggest difference in our systems is the Speed and the Self-Learning capabilities. Other systems “brag” that their TC works 10 times a second—our older systems worked 20 times a second, and while it would help “save a run”, it just was not fast enough to help you go faster.

The new systems (since Jan 2009) work every 1/8th of a turn of the driveshaft. At 3000 RPM DS speed, a very critical area for tire slip, it measures the DS RPM 400 times a second, at 6000 DS RPM it measures 800 times a second! The system then processes those measurements 50 times a second (typically), and as fast as 100 times a second, to calculate acceleration change (DS RPM Delta). (We can actually use up to 30 triggers, which would be 1500 times a second at 3000 DS RPM, and 3000 times a second at 6000 DS RPM !!)

Our units utilize 2 high speed processors to measure and calculate drive shaft data, and nothing else. Our patented systems are not simply a few lines of code thrown into an existing engine management system and called traction control. This is all we do, and all we have done for the past 14 years! **Traction Control Is What We Do!**

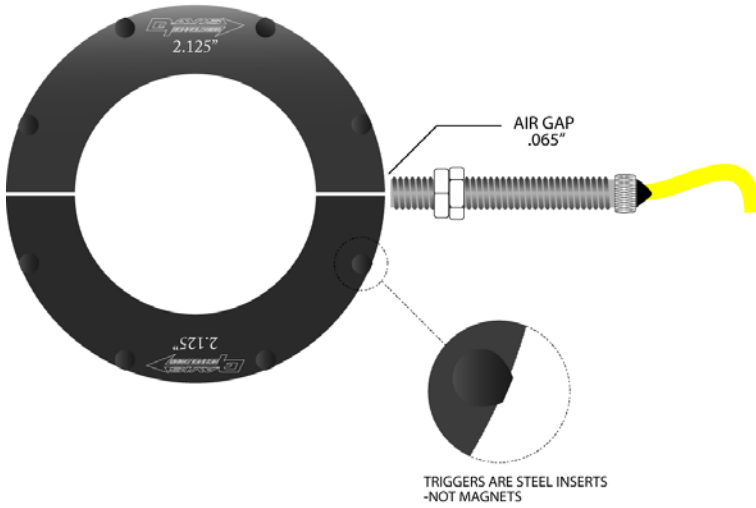
APPENDIX C

RacePak® Sensor Pin Out



RING & SENSOR

IF USING THE DAVIS TECHNOLOGIES RING AND SENSOR, USE THE FOLLOWING GUIDELINES



TRACTION CONTROL PANEL **SOFTWARE:**


(Drag Pro Systems Only)

The Traction Control Panel (TCP) software interface is used to adjust advanced tuning features of the traction control system.

These tuning features can be used to fine tune the system to exactly what the user desires.

On drag racing systems, this includes being able to tune the drive shaft RPM at which the system becomes active, as well as the RPM at which the system can be deactivated.

The user can also tune the length of corrections, and the amount of power that is cut on different parts of the race track.

The software based interface is easily downloaded from the web site and installed on your computer. The Traction Control is connected to the computer via a serial cable or through a secure wireless Bluetooth  connection. Tuning is achieved through a few simple mouse clicks.



MAIN TAB SETTINGS:

The Self Learning units incorporate two different methods to control wheel spin.

The second patented method is a less advanced process where the users sets a threshold of acceleration that if exceeded will cause the timing to retard.

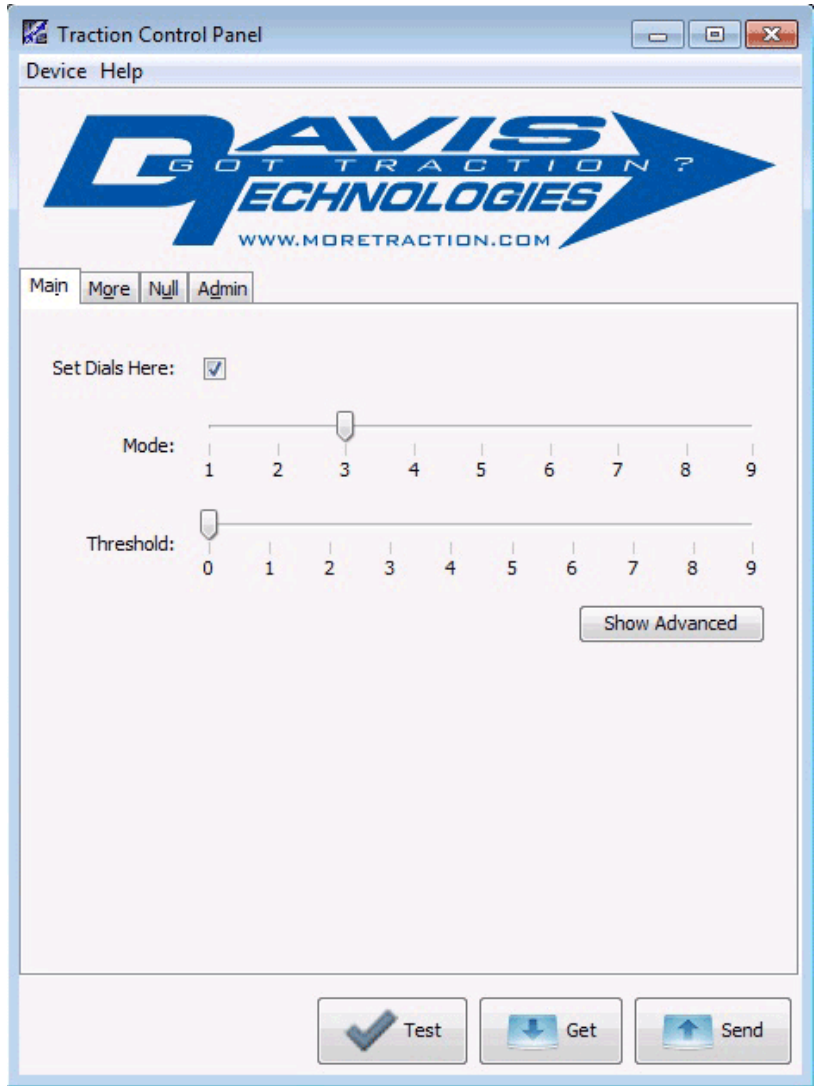
The second- *Non-Self Learning* system is activated when the “Threshold” setting is set to anything other than zero. The Non-Self Learning Method is only accessible using the “Traction Control Panel Software”.

Threshold is used to set this value. The higher the number the more sensitive the system is. A good starting point is 4. Valid settings for threshold are 1-9.

Mode is used to adjust the Mode of the unit using the software instead of the button on the unit as described earlier in this manual.

Note: To use the Mode and Threshold sliders in the software, you must check the “Set Dials Here” box. When checked, the TC unit only uses the TCP settings, and the setting cannot be changed using the button on the unit. To use the button method, YOU MUST UN-CHECK THIS BOX!

Main Tab- Basic Screen



ADVANCED MAIN TAB SETTINGS:

These settings should only be adjusted if advised to do so by Davis Technologies!

The **Buffer** setting is another feature that can be used to fine tune the system. The buffer sets the number of consecutive slip conditions required to cause a correction. Buffer 0 will react to each slip condition. Buffer 1 will require at least 2 consecutive slip conditions to cause a correction. This is useful to filter out small tire slips that may occur quickly, but have no ill effect on the car. (Buffer 1 is the default for most applications, but some experimenting with this setting may be useful to see what works best for you).

The **Frequency** of the unit can also be changed by the user, however this should only be done after consulting w/ tech support. The lower the number the faster the Sample Rate, which makes the unit less sensitive, but faster to react. The higher the number the slower the Sample Rate, which makes the unit more sensitive, but slower to react. Valid settings are 1-5. (Default=3 Dirt / 4 Asphalt)

Main Tab- Advanced Screen

The screenshot shows a software window titled "Traction Control Panel" with a "Device Help" menu. The main area features the Davis Technologies logo with the slogan "GOT TRACTION?" and the website "WWW.MORETRACTION.COM". Below the logo are tabs for "Main", "More", "Null", and "Admin".

Under the "Main" tab, there is a "Set Dials Here:" checkbox which is checked. Below this are four sliders:

- Mode:** A slider ranging from 1 to 9, with the knob positioned at 3.
- Threshold:** A slider ranging from 0 to 9, with the knob positioned at 0.
- Buffer:** A slider ranging from 0 to 3, with the knob positioned at 1.
- Frequency:** A slider ranging from 1 to 5, with the knob positioned at 3.

A "Hide Advanced" button is located to the right of the Threshold slider. At the bottom of the window are three buttons: "Test" (with a checkmark icon), "Get" (with a download icon), and "Send" (with an upload icon).

MORE TAB SETTINGS:

The More Tab allows the user to set the Starting RPM, Triggers, as well as some Advanced RPM controls.

STARTING RPM is a user adjustable setting that allows the racer to set the point at which the unit begins making corrections. If the Starting RPM is set to 1500 RPM, then the unit is active and monitoring the driveshaft speed, but not making any corrections until the Starting RPM is reached. Once the Starting RPM is reached, the unit will make corrections as needed, until the End RPM is reached.

END RPM is a user adjustable setting that allows the racer to set the point at which the unit stops making corrections. Once the End RPM is reached, the unit will stop making corrections.

TRIGGERS is a user adjustable setting that allows the racer to set the number of triggers the TC is picking up for each revolution of the measured shaft. In most cases, this is the number of triggers on the driveshaft collar.

More Tab- Basic Screen



MORE TAB ADVANCED SETTINGS:

The Advanced Screen of the More tab allows the user to tune the minimum number of driveshaft rotations that the timing will be retarded during a correction. This is useful to force the timing to stay retarded long enough to stop a high momentum spin, even though the RPM spike was very brief.

More Tab- Advanced Screen

The screenshot displays the 'Traction Control Panel' software window. At the top, there is a title bar with the text 'Traction Control Panel' and standard window control buttons (minimize, maximize, close). Below the title bar is a menu bar with 'Device' and 'Help' options. The main content area features the Davis Technologies logo, which includes the text 'DAVIS GOT TRACTION? TECHNOLOGIES' and the website 'WWW.MORETRACTION.COM'. Below the logo are four tabs: 'Main', 'More', 'Null', and 'Admin', with 'More' currently selected. The 'More' tab contains several settings: a 'Triggers' slider set to approximately 8, with a scale from 1 to 30; 'Starting RPM' set to 1500; 'Ending RPM' set to 9900; and a 'Min Corrections (revs)' slider set to 3, with a scale from 0 to 9. There are two buttons: 'Hide Advanced' (highlighted with a dashed border) and 'Reset All Settings To Default'. At the bottom of the window are three buttons: 'Test' (with a checkmark icon), 'Get' (with a download icon), and 'Send' (with an upload icon).

NULL TAB SETTINGS:

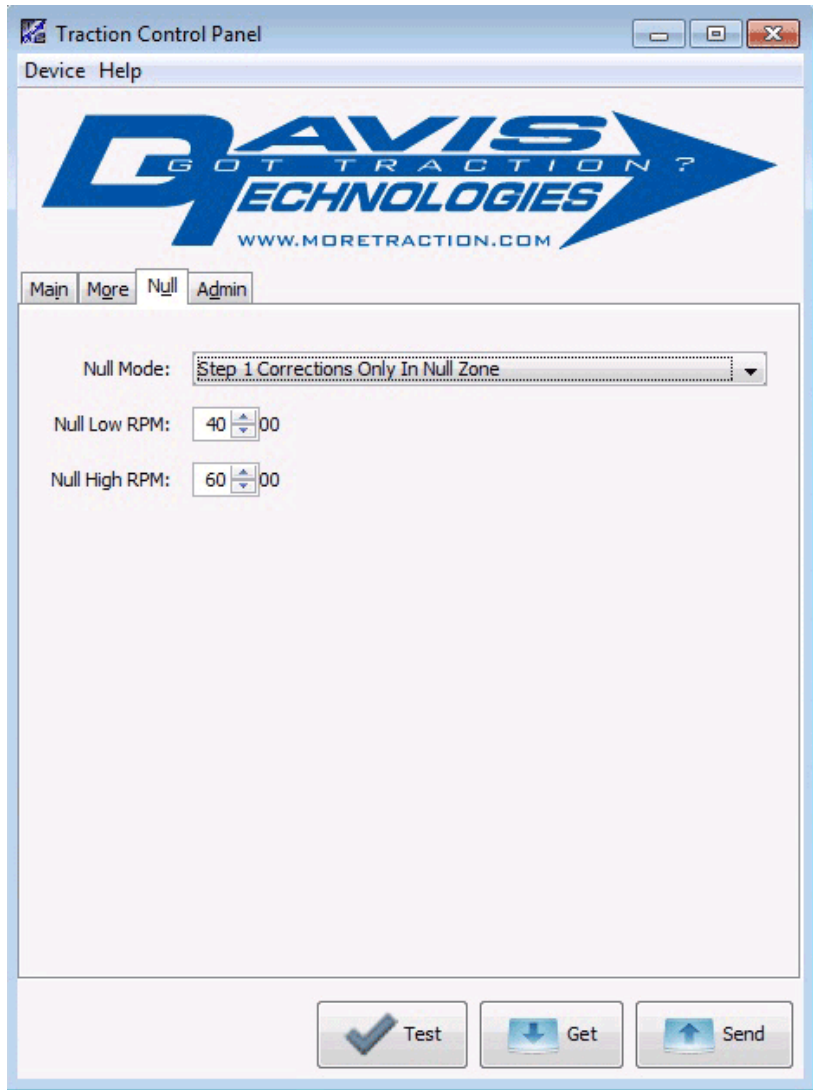
The Null zone is used to adjust how much timing, if any, is retarded on different parts of the track. These ranges are based shaft RPM.

STEP 1 & STEP 2 CORRECTIONS (NULL MODE 0): is used to allow the unit to make either correction in the RPM window set by the Null Low RPM and Null High RPM values. This is the same behavior as outside the RPN window, and is used to essentially deactivate the null zone without having to reset the RPM values. **(This is useful when setting up the Null Zone with the knobs on the unit if the software is not available. See “Traction Control Setup” above)**

STEP 1 CORRECTIONS ONLY (NULL MODE 1): is used to force the unit to only make small timing correction in the RPM window set by the Null Low RPM and Null High RPM values.

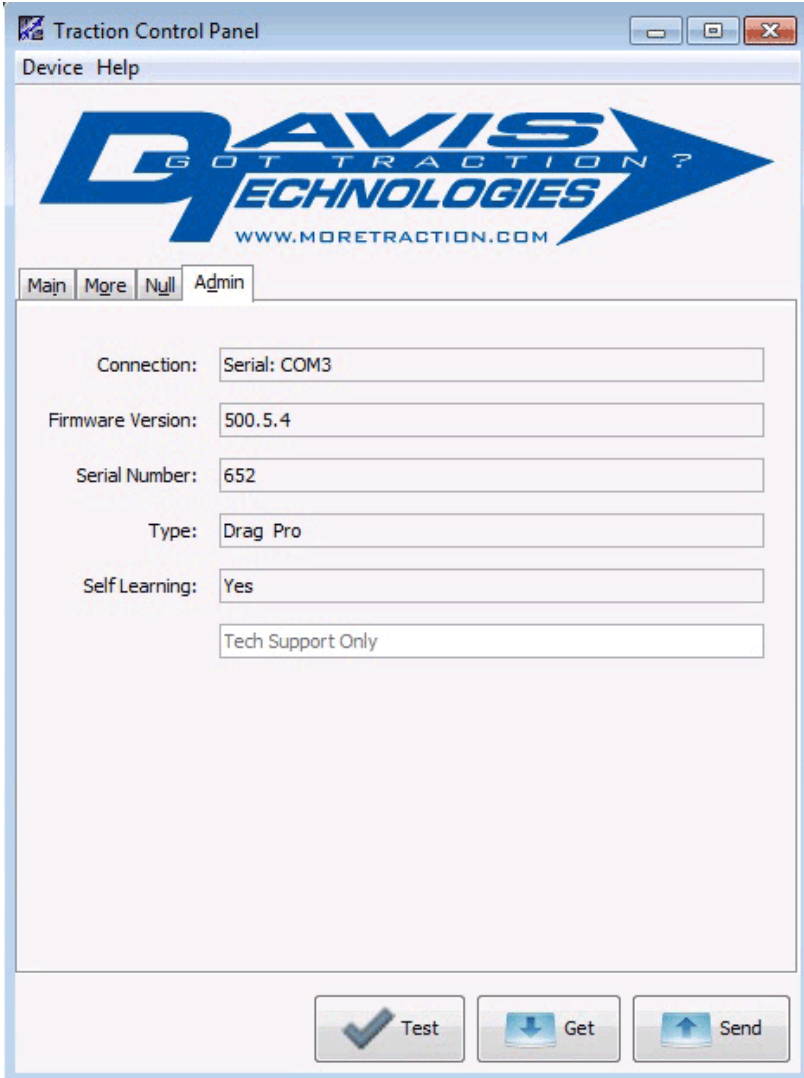
NO CORRECTIONS (NULL MODE 2): is used to force the unit to make no timing correction in the RPM window set by the Null Low RPM and Null High RPM values.

Null Tab Screen



ADMIN TAB:

The Admin screen is used to provide information about the unit for tech support by Davis Technologies.



Traction Control Panel

Device Help

DAVIS
GOT TRACTION?
TECHNOLOGIES
WWW.MORETRACTION.COM

Main More Null Admin

Connection: Serial: COM3

Firmware Version: 500.5.4

Serial Number: 652

Type: Drag Pro

Self Learning: Yes

Tech Support Only


Test Get Send

USB TO SERIAL ADAPTER:

Newer laptop computer may not have an actual RS232 DB9 connector installed. In this case a USB to Serial adapter will be required. Not all adapters are created equally, and some brands may not work properly with the Traction Control Panel software. Most brands work without any problems, but occasionally we find some that do not. Davis Technologies offers a model that has been tested on many brands of computers as well as across many operating systems. These are available for \$29.95 from Davis Technologies directly.



HANDHELD PROGRAMMER

The handheld programmer can be used to adjust all of the parameters that the TCP software does, but is a simple, self contained system that does not require a computer. Most users prefer the handheld. The handheld programmer is available as a hard wired unit, or a wireless Bluetooth  connected unit.



DISCLAIMER

Motor sports products and parts are sold "as is" without any warranty whatsoever. Implied warranties, including warranties of merchantability or fitness for a particular purpose, are excluded. The entire risk of quality and performance of such parts is with the buyer. Should such parts prove defective following their purchase, the buyer and not the manufacturers, distributors, or retailers, assumes the entire cost of all necessary services or repair.

The Davis Technologies, LLC's products and parts warranties are voided if the vehicle or part is used for competition or if they fail as a result of modification.

It is the purchaser/competitor's responsibility to inspect and verify the dimensions, specifications, and performance of all parts as being appropriate for the use to which the purchaser/competitor will put them prior to any actual installation and use of said products and/or parts.

The purchaser/competitor is on notice that motor sport competition (commonly known as "racing") is an inherently dangerous activity which can result in serious personal injury and even death to participants and even to spectators. If these parts and/or products are used in motor sport competition, any and all risk of and liability for any resulting damage, injury or death is with the purchaser/competitor. In no event shall Davis Technologies LLC be held liable for special or consequential damages.

CONTACT INFORMATION

Technical support and sales may be reached at:

DAVIS TECHNOLOGIES, LLC.

PO Box 8250

Asheville, NC. 28787

(828) 645-1505

(828) 645-1525 fax

email: support@moretraction.com

web: www.MORETRACTION.com





WWW.MORETRACTION.COM